

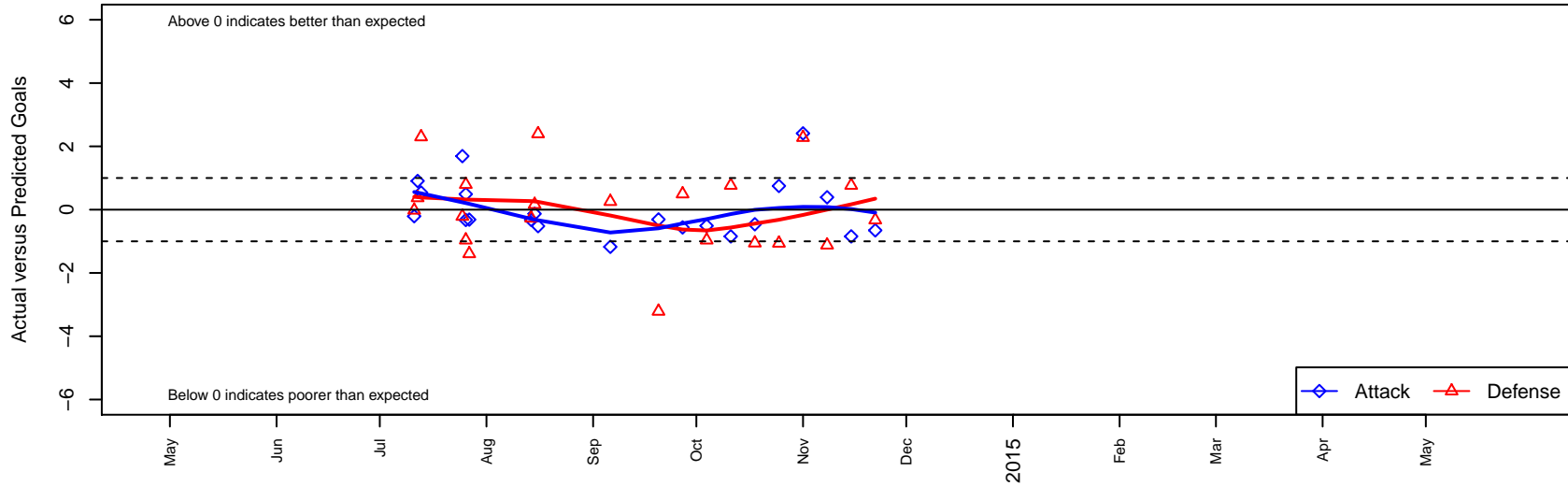
# Seattle United NE White B01

Seattle United Regional  
 Seattle, WA  
 B01 total strength=340  
 attack=0.18 defense=0.23  
 fall league = NPSL B13D3

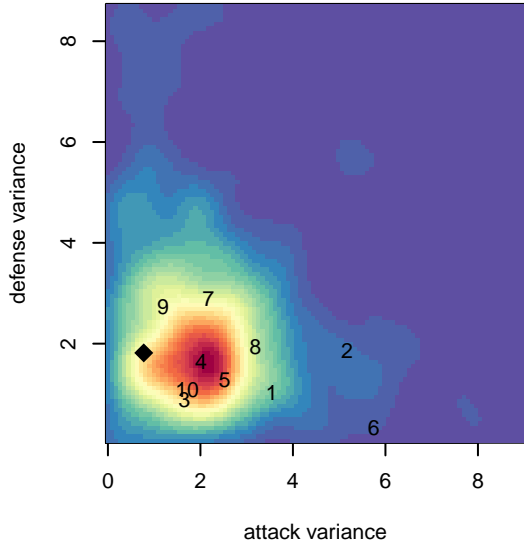
alt names used:  
 SEATTLE UNITED SU B01 NE WHITE (WA)  
 Seattle United NE B01 White  
 Seattle United NE B01 White  
 SU NE White [B01]

Venues played:  
 2014 Seattle Cup BU13  
 2014 Crossfire Select Cup BU13  
 2014 Bigfoot Bronze U13  
 2014 NPSL B13D3

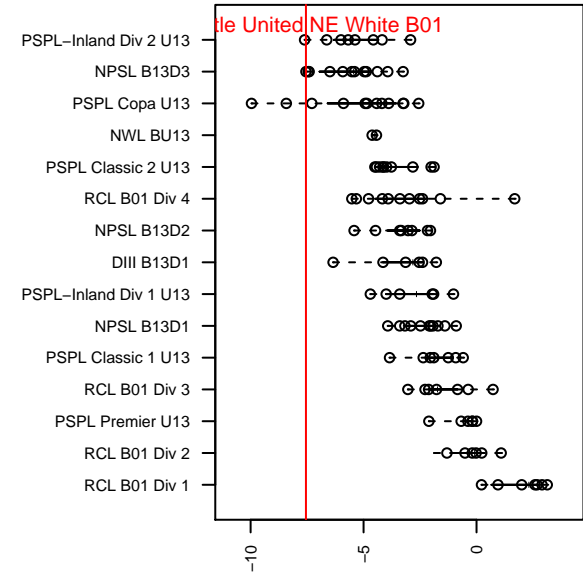
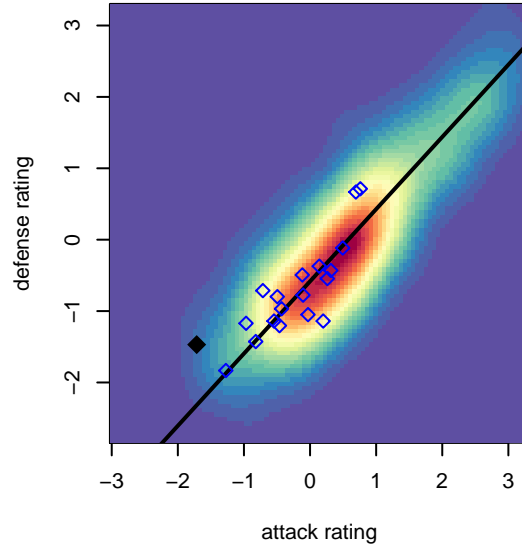
**Seattle United NE White B01**  
 Dots are actual minus expected GF (blue circles) and GA (red triangles).  
 Blue line is smoothed change in attack strength. Red is smoothed change in defense strength.



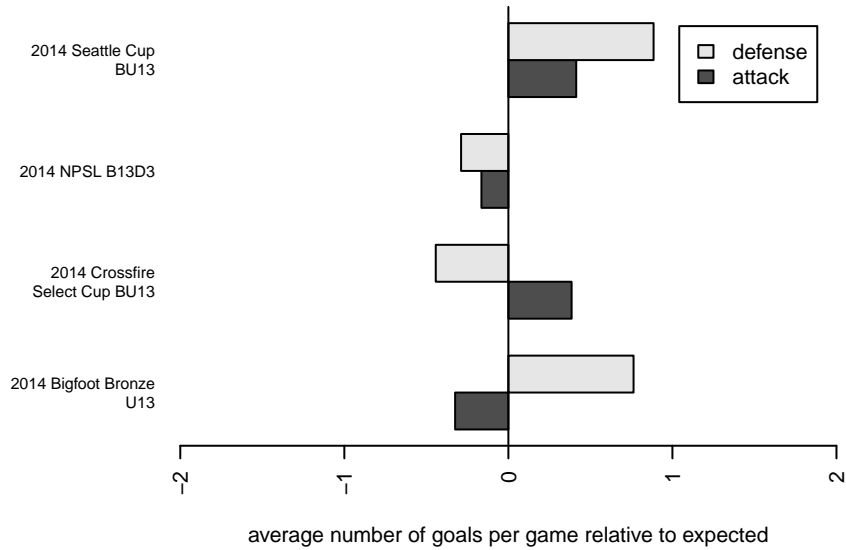
**attack and defense variance (black dot)  
relative to other teams  
and top 10 in region**



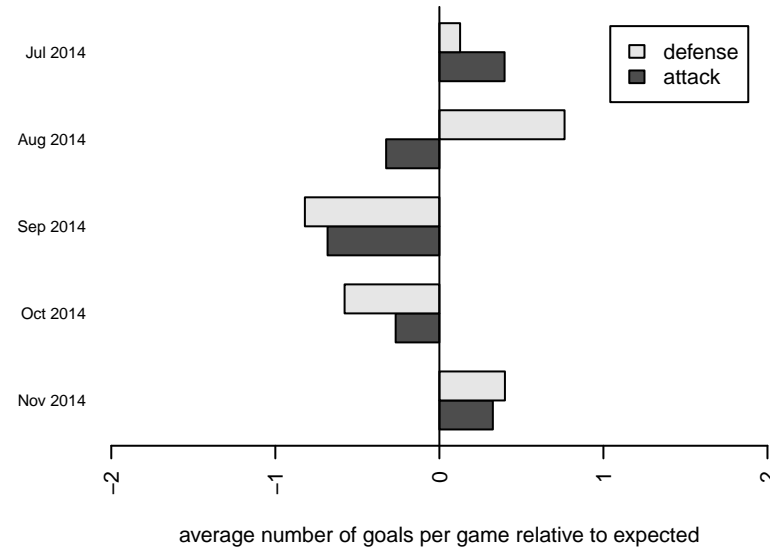
**attack and defense rating  
relative to others at age  
and all opponents in last 13 months**



**Performance relative to 13 month average**



**Performance relative to 13 month average**



<b>date</b>	<b>home</b>		<b>away</b>		<b>venue</b>	<b>pred.home</b>	<b>pred.away</b>
2014-11-22	Seattle United NE White B01	0	Mercer Island FC Cascade B01	3	2014 NPSL B13D3	0.65	2.67
2014-11-15	Seattle United NE White B01	0	South Whidbey Islanders B01	1	2014 NPSL B13D3	0.84	1.77
2014-11-08	Snohomish United White B01	3	Seattle United NE White B01	1	2014 NPSL B13D3	1.88	0.61
2014-11-01	Seattle United NE White B01	3	Tracyton B01	3	2014 NPSL B13D3	0.59	5.28
2014-10-25	Seattle United NE White B01	1	BIFC Blue B01	6	2014 NPSL B13D3	0.25	4.94
2014-10-18	PSA Force Black B01	4	Seattle United NE White B01	0	2014 NPSL B13D3	2.95	0.46
2014-10-11	South Whidbey Islanders B01	1	Seattle United NE White B01	0	2014 NPSL B13D3	1.77	0.84
2014-10-04	Seattle United NE White B01	0	Crossfire Select Perry B01	4	2014 NPSL B13D3	0.51	3.04
2014-09-27	NWSC Islanders B01	2	Seattle United NE White B01	0	2014 NPSL B13D3	2.50	0.56
2014-09-20	Newport FC Real B01	7	Seattle United NE White B01	0	2014 NPSL B13D3	3.79	0.31
2014-09-06	Storm King White B01	1	Seattle United NE White B01	0	2014 NPSL B13D3	1.26	1.17
2014-08-16	Seattle United NE White B01	0	Lake Hills Legends B01	2	2014 Bigfoot Bronze U13	0.52	4.40
2014-08-15	Seattle United NE White B01	0	TUSK United B01	9	2014 Bigfoot Bronze U13	0.13	9.16
2014-08-14	Seattle United NE White B01	0	Whatcom Rangers White B01	6	2014 Bigfoot Bronze U13	0.32	5.73
2014-07-27	Kitsap Pumas 1 B01	4	Seattle United NE White B01	0	2014 Crossfire Select Cup BU13	2.61	0.31
2014-07-26	Crossfire Select Nakamura B01	5	Seattle United NE White B01	0	2014 Crossfire Select Cup BU13	5.79	0.33
2014-07-26	Crossfire Select Perry B01	4	Seattle United NE White B01	1	2014 Crossfire Select Cup BU13	3.04	0.51
2014-07-25	Seattle United NE White B01	2	Newport FC Real B01	4	2014 Crossfire Select Cup BU13	0.31	3.79
2014-07-13	Seattle United NE White B01	1	Breakers White B01	1	2014 Seattle Cup BU13	0.46	3.30
2014-07-12	Seattle United NE White B01	1	Seattle United W Blue B01	9	2014 Seattle Cup BU13	0.09	9.37
2014-07-11	BYSC Select Venom B01	7	Seattle United NE White B01	0	2014 Seattle Cup BU13	6.98	0.21